



MATTERHORN®

Architectural
Metal Roofing

Shown in Cedar

**BEST BUY METALS**
Roofing That Lasts





It's More Than Just a Roof

Not only does your roof protect the contents of your home, it also protects you, your family, and your lifestyle. A roof is practical, but there's really nothing practical about the way it looks.

A roof can make an ordinary home extraordinary. Matterhorn® Metal Roofing gives your home the authentic look, design, and natural detail of real wood shake, quarried slate, and traditional clay tile roofing. It's stronger than steel, and capable of withstanding wind, hail, and fire. It has the strongest warranty in the industry, backed by performance and innovation. It's sustainable and energy efficient, available in 16 CRRC-rated colors.

**MATTERHORN METAL ROOFING.
MORE THAN JUST A ROOF.**

Shown in Tuscan Stone





Profiles

Tile

We went to great lengths to replicate the charming allure of clay, and the result is a convincing interpretation of real tile forged in steel.

Shake

Expertly designed to capture the character of real wood, Matterhorn® Shake's stylized chiseling creates an appealing texture and dimension.

Slate

Lightweight and durable, Matterhorn Slate's patented paint system captures the timeless, natural beauty of mottled stone.

Shown in Brick Blend



Shown in Weathered Terracotta



Shown in Weathered Terracotta



Shown in Brick Blend



Shown in Weathered Sage



Shown in Weathered Canyon

Matterhorn® Tile



Brick Blend
CRRC# 0668-0102



Jade
CRRC# 0668-0103



Terracotta
CRRC# 0668-0104



Tuscan Stone
CRRC# 0668-0105

Weathered Canyon
CRRC# 0668-0114



Weathered Sage
CRRC# 0668-0112



Weathered Terracotta
CRRC# 0668-0111



Weathered Sequoia
CRRC# 0668-0106



Shown in Timber Ash



Shown in Timber Ash



SHAK



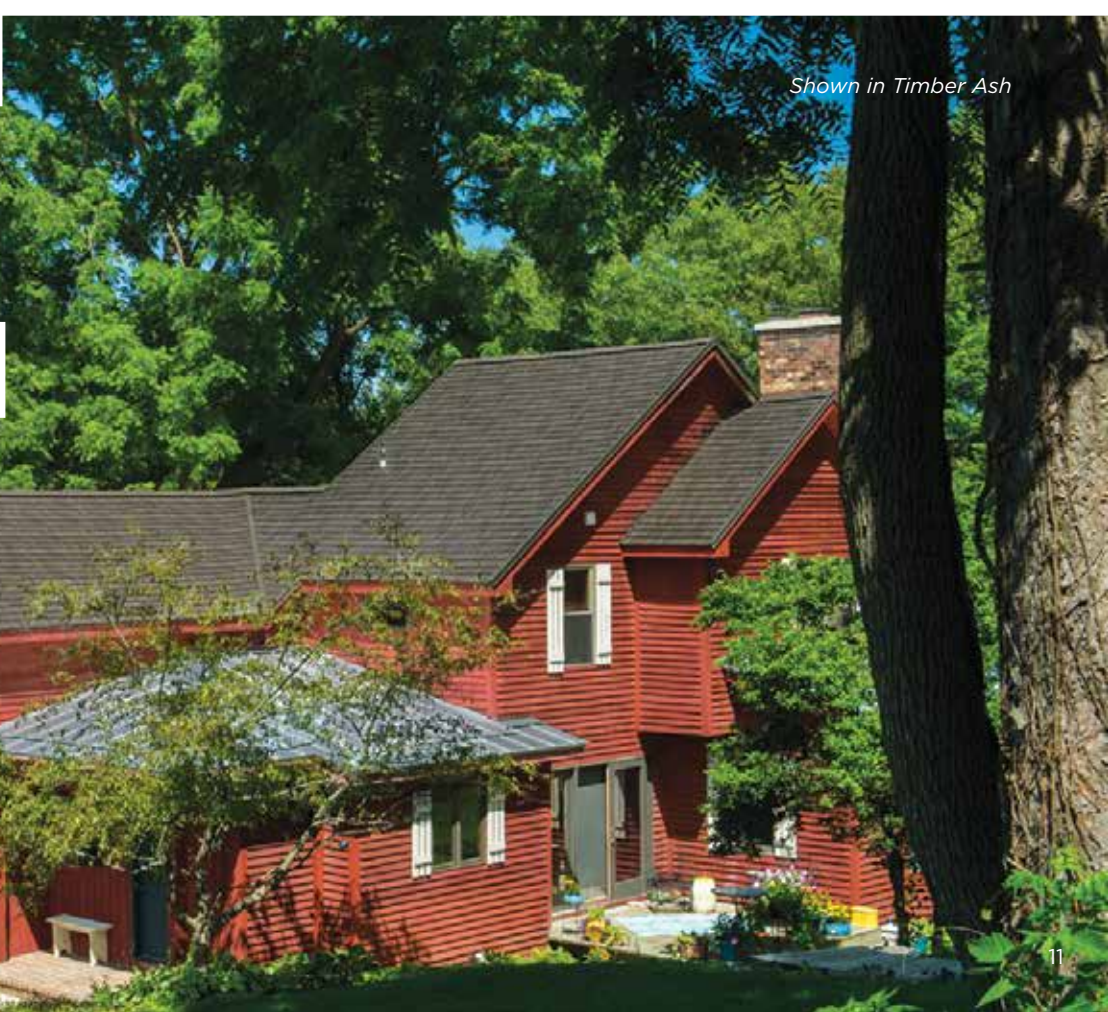
Shown in Weathered Wood



Shown in Weathered Wood



KE



Shown in Timber Ash

Matterhorn® Shake



Cedar
CRRC# 0668-0107



Shorewood
CRRC# 0668-0110

Timber Ash
CRRC# 0668-0113



Weathered Wood
CRRC# 0668-0108



Shown in Storm Slate



SLATE

Shown in Storm Slate



Shown in Castle Gray



Shown in Cobalt



Shown in Brownstone

Shown in Storm Slate



Matterhorn® Slate



Brownstone
CRRC# 0668-0109



Castle Gray
CRRC# 0668-0145



Cobalt
CRRC# 0668-0144

Mountain Sage
CRRC# 0668-0136



Storm Slate





Performance

Matterhorn Metal Roofing is engineered to provide the high performance you expect from a luxury roof.

- Class 4 Impact Resistance
- Class A Fire Resistance
- 130 mph Wind Rating
- 16 CRRC-rated Cool Roof colors, reflect up to 66% of the sun's rays



Cool Roof Technology

Matterhorn's PVDF Tri-Pigment Reflective Technology® paint system offers the ultimate in reflectivity and fade protection. Most Matterhorn colors are CRRC (Cool Roof Rating Council) rated. This means your roof stays cooler and reduces the amount of heat transferred into your home, significantly lowering your energy costs.





Clear Coat

Tri-Pigment Reflective Technology[®]
Featuring a PVDF Paint System.

Zinc Phosphate

An additional anti-corrosive layer
provides a superior bond for the paint.

**Thermally Deposited
Anti-Corrosive Coating**



**Solid
Painted
Back**
Every surface
is covered.

Stronger Than Steel

Matterhorn® metal roofing starts with DDS high-performance G90 steel. Multiple layers of advanced polymer coatings are applied over the metal substrate. These coatings, along with the modern metallic alloys, provide outstanding corrosion resistance. The protective properties of these coatings create a self-healing surface. The result is metal roofing that is quite literally **stronger than steel.**

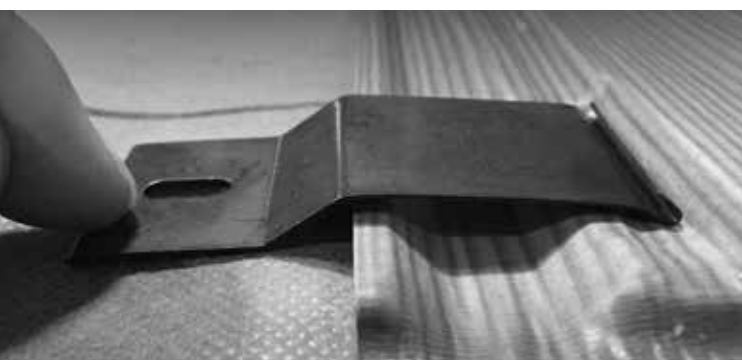
Each panel is painted with a high-performance Valspar PVDF paint system, specifically engineered for fade resistance to last a lifetime.

layer that provides
system.

**sited
G90 Coating**

**DDS High-Performance
Steel Alloy**

Engineering Details & Specifications



MATTERHORN TILE

SPECIFICATIONS

- Multi-layer PVDF coating system to resist weathering, aging, rust, and pollution
- 0.019" Thickness
- 98 lbs. per square
- 16 panels per square
- Nominal Dimensions:
 - 20-5/8" w x 48-1/4" L uninstalled
 - 18-3/16" w x 47-1/4" L installed
- Min. Pitch: 3:12

Metal roofing products are tested to ensure the highest quality and comply with the following industry standards:

Fire Resistance

- Complies with ASTM E108 Class A, Class B
(See Manufactures Technical Data Sheets for Specific Systems)

Impact Resistance

- Complies with UL 2218, Class 4

Wind Uplift Resistance

- Warranted to 130 MPH
- UL 1897
- Wind-Driven Rain, AC166 (Sec 4.2)

Solar Reflectance

- 8 CRRC-rated colors

Quality Testing & Approval

- CCMC 14115-R
- TDI RC-487
- FL21470
- IAPMO UEL-5004
- IAPMO ER-375



MATTERHORN SHAKE

SPECIFICATIONS

- Multi-layer PVDF coating system to resist weathering, aging, rust, and pollution
- 0.016" Thickness
- 96 lbs. per square
- 16 panels per square
- Nominal Dimensions:
 - 22-1/8" w x 47-1/2" L uninstalled
 - 20-1/2" w x 45-7/8" L installed
- Min. Pitch: 3:12

Metal roofing products are tested to ensure the highest quality and comply with the following industry standards:

Fire Resistance

- Complies with ASTM E108 Class A, Class B
(See Manufactures Technical Data Sheets for Specific Systems)

Impact Resistance

- Complies with UL 2218, Class 4

Wind Uplift Resistance

- Warranted to 130 MPH
- UL 1897
- Wind-Driven Rain, AC166 (Sec 4.2)

Solar Reflectance

- 4 CRRC-rated colors

Quality Testing & Approval

- CCMC 14110-R
- TDI RC-487
- FL21470
- IAPMO UEL-5004
- IAPMO ER-375



MATTERHORN SLATE

SPECIFICATIONS

- Multi-layer PVDF coating system to resist weathering, aging, rust, and pollution
- 0.016" Thickness
- 96 lbs. per square
- 16 panels per square
- Nominal Dimensions:
 - 22-1/8" w x 47-1/2" L uninstalled
 - 20-1/2" w x 45-7/8" L installed
- Min. Pitch: 3:12

Metal roofing products are tested to ensure the highest quality and comply with the following industry standards:

Fire Resistance

- Complies with ASTM E108 Class A, Class B
(See Manufactures Technical Data Sheets for Specific Systems)

Impact Resistance

- Complies with UL 2218, Class 4

Wind Uplift Resistance

- Warranted to 130 MPH
- UL 1897
- Wind-Driven Rain, AC166 (Sec 4.2)

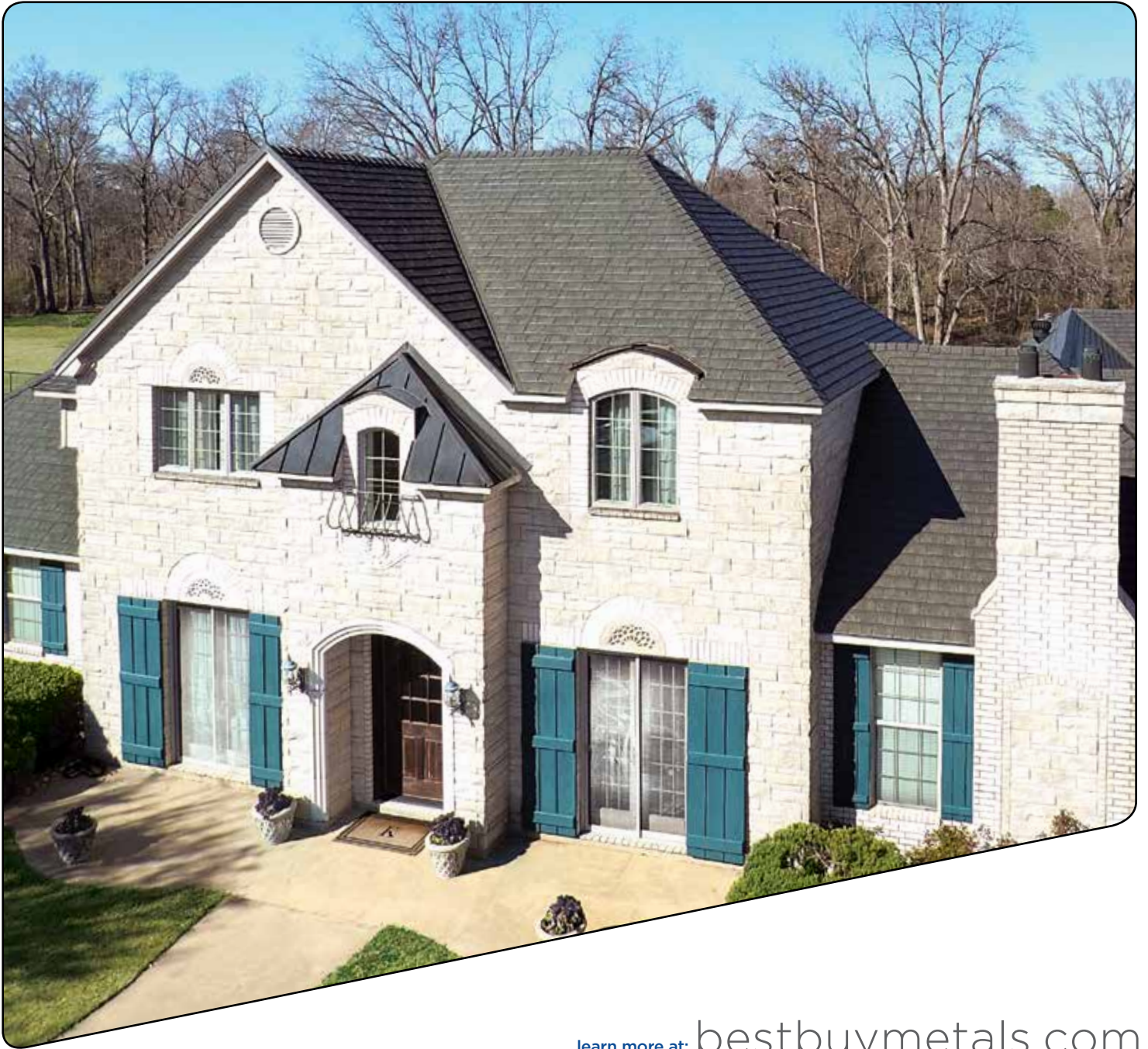
Solar Reflectance

- 4 CRRC-rated colors

Quality Testing & Approval

- CCMC 14110-R
- TDI RC-487
- FL21470
- IAPMO UEL-5004
- IAPMO ER-375

RESIDENTIAL ROOFING



learn more at: bestbuymetals.com



Best Buy Metals

METAL ROOFING • METAL SIDING • METAL BUILDINGS

1652 S Lee Hwy, Cleveland, TN 37311 800-728-4010 bestbuymetals.com