

# PROFILE RIDGE VENT - SPECIFICATIONS

## Rolls



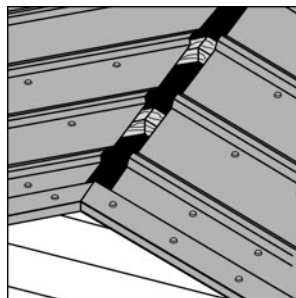
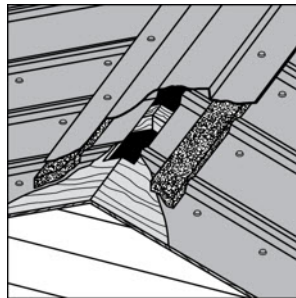
- 40 year limited warranty
- Glue spots prevent slipping during installation
- Fits under any ridge cap
- Fits any pitch 2:12 – 20:12
- One person roll-out installation •
- Won't scratch panel finish
- Won't crack, dent or rust during shipping or installation
- Won't clog from airborne dust
- Prevents insect infiltration
- Prevents snow infiltration
- Provides proven roof ventilation
- Meets all model building codes
- Will not support a flame
- Made in U.S.A.

## Application

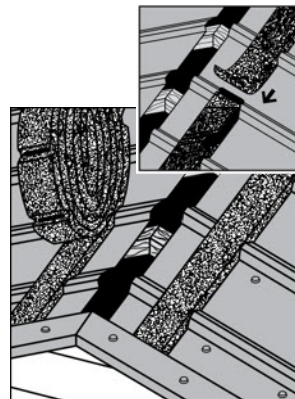
### Profile Vent Rolls

New or re-roof on Purlin or wood deck Construction:

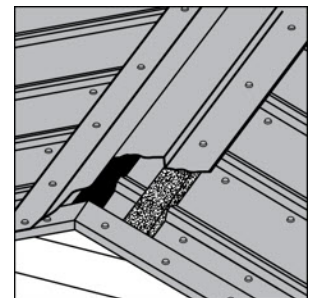
Use a 2-3" opening at the ridge to provide ventilation. On new or re-roof wood deck construction, cut a 2-3" slot at the ridge (1-1.5" each side, start cut 6" from gable ends). On purlin construction position panels to leave a 2-3" opening.



**1** Allow 2" opening at ridge for ventilation. ProfileVent is rolled out along the ridge, gable to gable, about 1" up-slope from the ridge cap edge. The positioning adhesive on most profiles will hold ProfileVent in position and allow for repositioning.



**2** ProfileVent can be cut with scissors or utility knife.  
*Inset:* When splicing ProfileVent, make the splice at the center top of the high rib and use caulk or sealant along the splice.



**3** Screw down or pop rivet the ridge cap according to manufacturer's instructions (works with any ridge cap).

## 3' Strip Option - Tuff-Rib Only

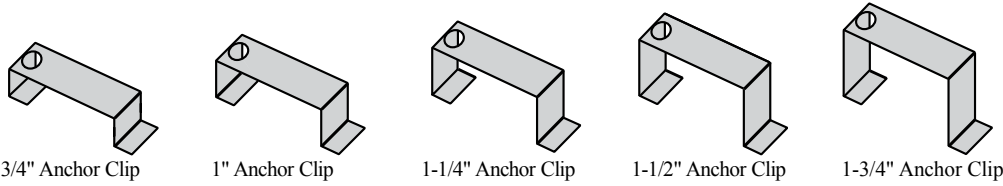


- For Tuff-Rib Only
- 1" deep x 2" wide x 3' length • Installs just like closure
- No release paper

- Cut to fit profile
- Won't dry out from exposure
- 24 pieces/carton — 72 linear feet

# Clips - For Profile Vent - Used with Standing Seam

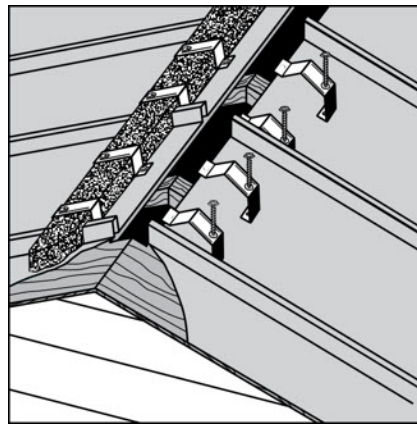
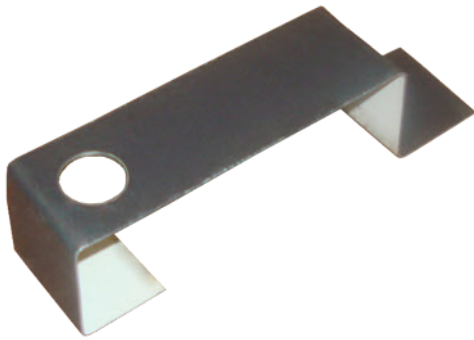
Use with Standing Seam panels. Figure either 1 or 2 clips per panel.



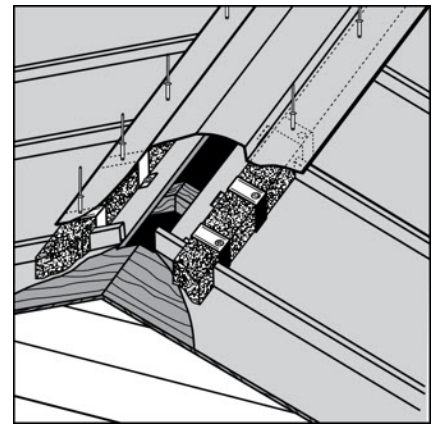
## Specifications

- Visible surface painted black for aesthetic purposes
- Galvalume Steel

## Application



**1** Install your metal roofing panel according to manufacturer's instructions. Before installing ProfileVent®, insert #14A screw through the large down-slope access hole in top of the Ridge Cap Anchor Clip.



**2** Lift the back end of clip. Slip ProfileVent under the clip. Push clip back down and insert another #14A screw in the up-slope hole.

## Anchor Clip Detail

