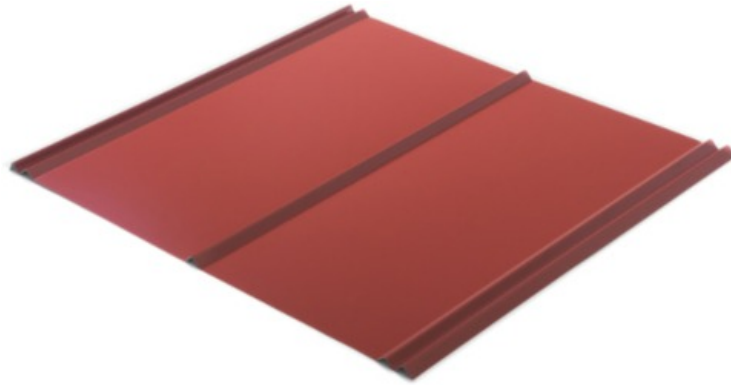


5V-Crimp

Vintage styling with a modern touch.



For over five decades, 5V-Crimp has graced barns and sheds across America in simple non-painted zinc and zinc-alum finishes. With simple lines and traditional “V” ribs, 5V-Crimp is popular in coastal regions and the Southeast.

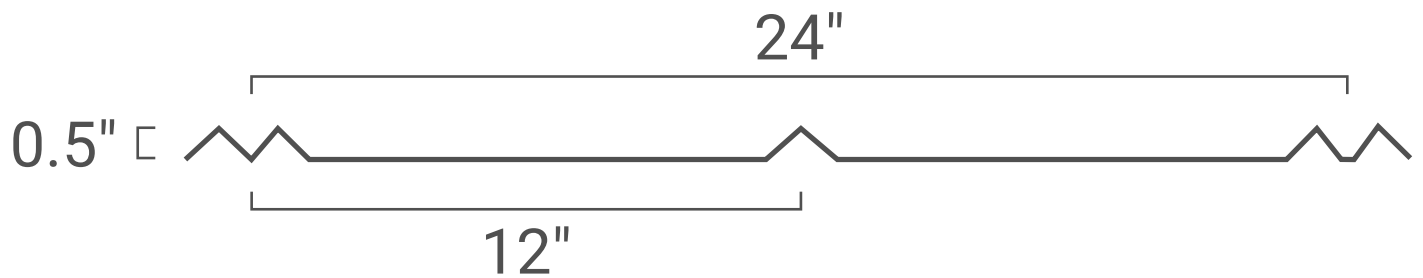


Design & Size



No need to lap multiple panels - 5V-Crimp is cut to the inch per your specifications. Any length is available from 3' up to 45' - though for handling 30' maximum is recommended.

5V-Crimp's design features five 1/2" high ribs, two on each side and one in the middle.



Warranty & Finish



Painted 5V-Crimp carries a 40 year paint warranty and 30 year fade/chalk warranty and has primer and Galvalume under the paint.

Unpainted Galvalume carries a 25 year warranty and is a 45% zinc and 55% aluminum coating with a clear acrylic overcoat.

Some plants also provide unpainted galvanized which is carries no warranty and is a zinc coating.



Purpose & Use

5V-Crimp is primarily installed on homes in the South and Southeast, combining vintage formed “V” crimp ribs with the strength and versatility of steel.

5V-Crimp is Florida and Miami-Dade Hurricane Zone approved as well as passing both Texas Windstorm and UL90 wind uplift testing.



MINIMUM SLOPE
3:12



SUBSTRATE
Solid Deck



FLORIDA APPROVALS
Florida Building Code
Miami-Dade Hurricane Zone

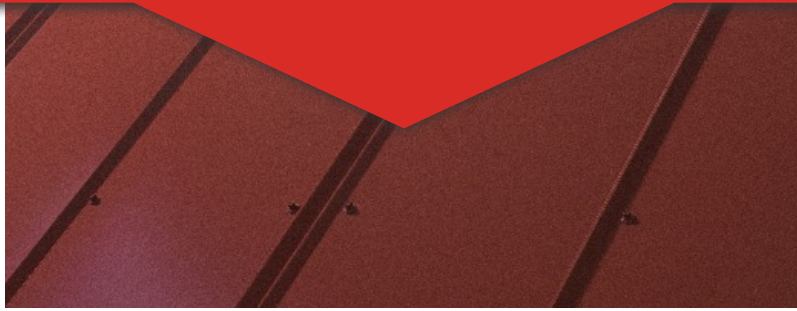
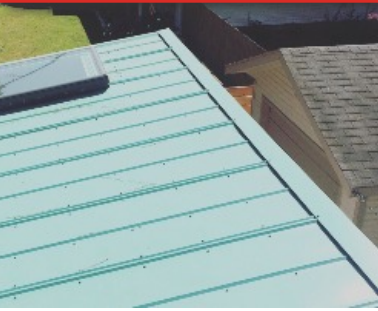


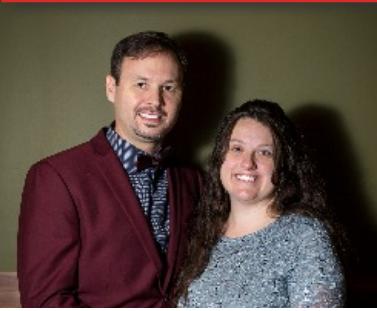
INTENT
Residential
Agricultural



CATEGORY
Through Fastened Panel

Inspiration





PEOPLE



MAKE



THE



DIFFERENCE